

**M**obile waste oil drains are used for gravity or suction collection of motor oil and gear oil, as well as other automotive, non-aggressive A-III class fluids like anti-freeze.

Models for gravity collection are fitted with a telescopic bowl and they can be used under vehicle lifts or inside lubrication pits for collection of the used fluid. All drains include a 5 gallon capacity, height adjustable collection bowl for wider reach. All 27 gallon models include over-sized extension bowl with anti-splash screen. All models are equipped with a level gauge.

Once full, depending on model, the reservoir can be discharged either using a remote pump through a dry-break or a Camlock connector or pressurizing the unit reservoir at 3.5 psi (0,5 bar) maximum.

3733B



3734



### Gravity collection with remote pump discharge

Discharge is done connecting the unit to a wall mounted discharge pump using a cam-lock coupling.

#### Part No. 3723

27-gallon gravity waste oil drainer. Remote pump discharge.

#### Part No. 3733

18-gallon gravity waste oil drainer. Remote pump discharge.

Order **Part No. 737 968** for optional bowl extension.

### Gravity collection with pressure discharge

Discharge is done through a 5' hose pressurizing the unit reservoir. Includes a safety valve to avoid over pressurization.

#### Part No. 3724

27 gallon gravity waste oil drainer, pressure discharge.

#### Part No. 3734

18 gallon gravity waste oil drainer, pressure discharge.

Order **Part No. 737 968** for optional bowl extension.

## TRADITIONAL OIL DRAIN UNITS

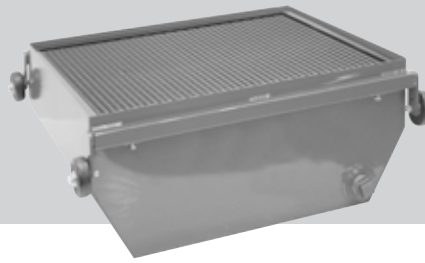


### USED FLUID COLLECTION - SPECIALTY DRAINERS



**Part No. 1352**

Heavy duty 28 gallon used oil wagon. Only 9" high. Built in baffles and splash deflectors. Heavy duty, 14 gauge construction. Recessed shelf for draining filter. 6" HD wheels. Empties quickly, 3/4" drain valve. Can be easily connected to a pumping system for evacuation. (Order Part No. 1314 dry-break nipple).



**Part No. 1355**

34 gallon rolling pit drain. Heavy duty construction, with anti-splash screen. Accommodates 31 1/2" - 49 1/2" opening. Dimensions: 28" W x 24" L x 12" H.



**Part No. 1336**

Special low-profile pressurized oil drain with swing-arm funnel tray. Allows easy positioning for hard to access drain plugs. Ideal for motorcycle, marine, off-road, lawn, farm and in-plant use. 9 gallon capacity, air discharge to empty unit. Drain tray adjusts from 29" to 37" high.

**Part No. 1356 (not shown)**

Hook up kit for 1355 with short nipple, quarter turn ball valve, camlock coupler and dust cap.



**Part No. 1347**

Deluxe 17", 5 gallon funnel with drain tube, dipstick and 2" bung bushing adaptor (fits 16 gal bung type. Drum not included).

**Part No. 1349 (not shown)**

Deluxe 17", 5 gallon funnel with drain tube, dipstick and 16 Gal drum cover. (Drum not included).

**Part No. 737 968 (not shown)**

25" plastic extension bowl insert with anti-splash screen.

**Part No. 1360**

Heavy Duty pedestal type drain. Extends to 78". Includes Heavy Duty deluxe 17", 5 Gal bowl. Order 1361 valve adaptor extra.

**Part No. 1361**

Valve opening adaptor for use with pedestal drain. 2" male bung threads.



**Part No. 373 344**

All metal under-vehicle used fluid drain. Functional and economical 7 gallon capacity. Features a 11-1/4" diameter bowl with screen; height adjustable from 38" to 66".



**1351 SERIES**

Oil drains designed for 16 gallon kegs, include a 17" steel drain bowl with 5 gallon capacity, unique keg cover with anti-leak lip, telescopic drain tube dipstick level indicator, bung adaptor and four wheel band dolly.

**Part No. 135 100**

For use on customer supplied 16 gallon keg.

**Part No. 135 101**

Complete with 16 gallon keg supplied in package.

**Part No. 135 103**

Complete with top-mounted suction kit (suction tube and dry break nipple), for use with customer supplied 16 gallon keg.

**Part No. 135 104**

Complete with top-mounted suction kit (suction tube and dry break nipple), and 16 gallon keg supplied in package.